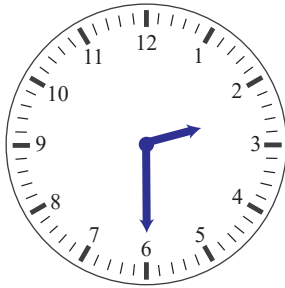
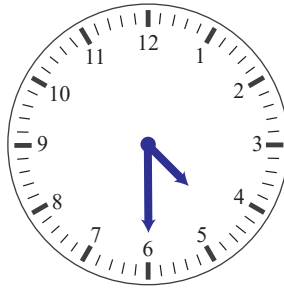
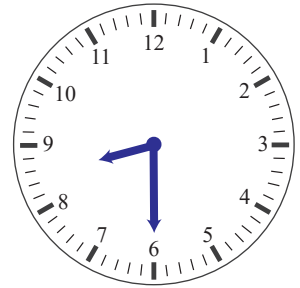


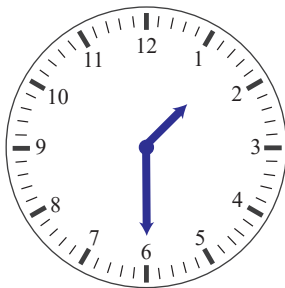
Telling time to the half hour

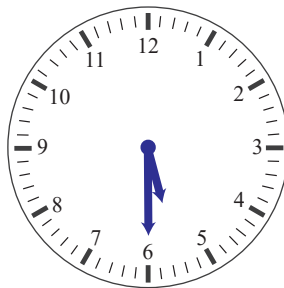
Tell the time on these clocks. Use *o' clock* and *half past*.

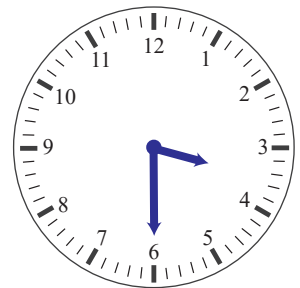


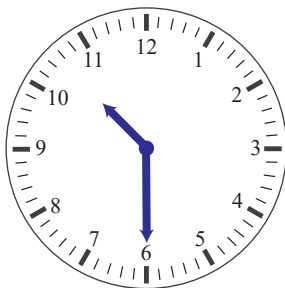


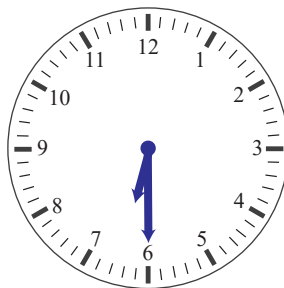


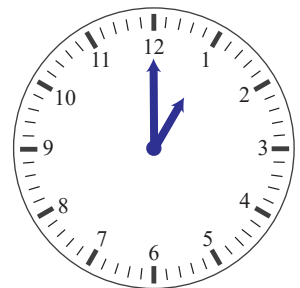


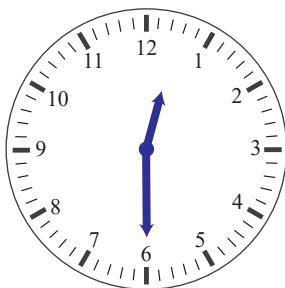


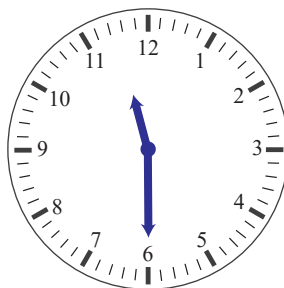


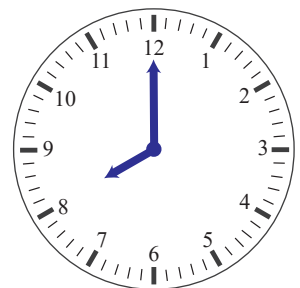






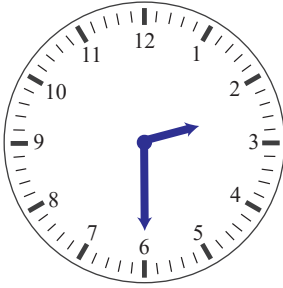




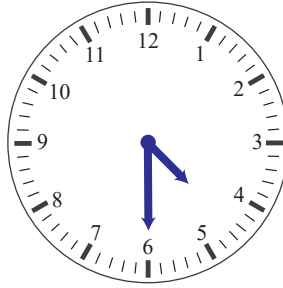


Telling time to the half hour

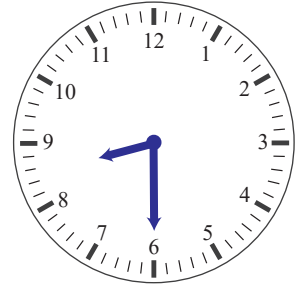
Tell the time on these clocks. Use *o' clock* and *half past*.



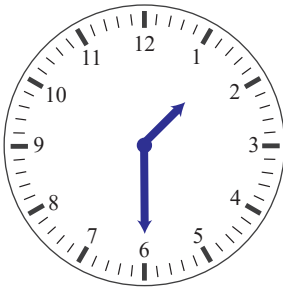
half past 2



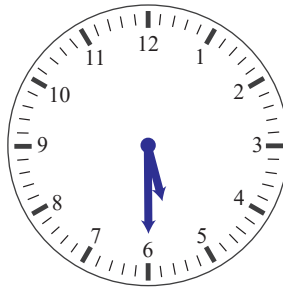
half past 4



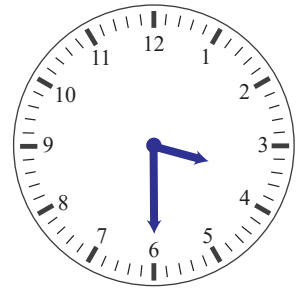
half past 8



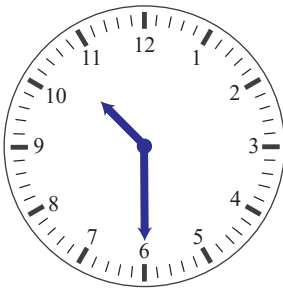
half past 1



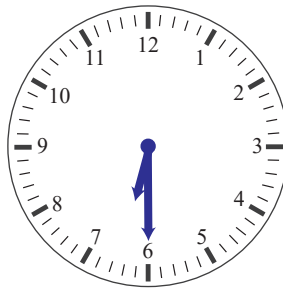
half past 5



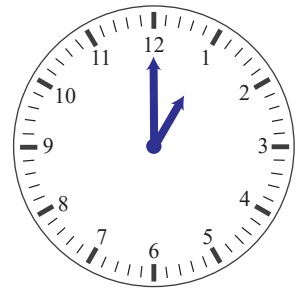
half past 3



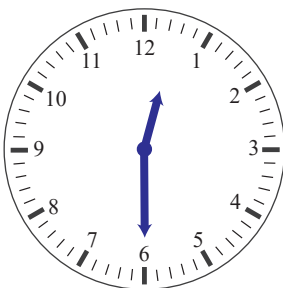
half past 10



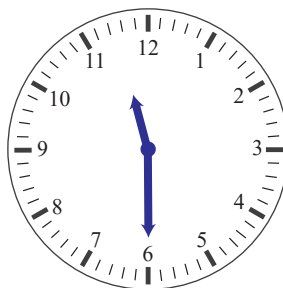
half past 6



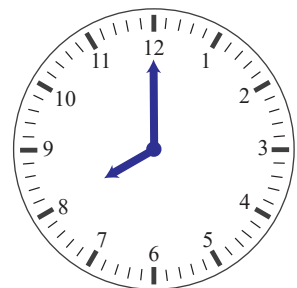
1 o' clock



half past 12



half past 11



8 o' clock
