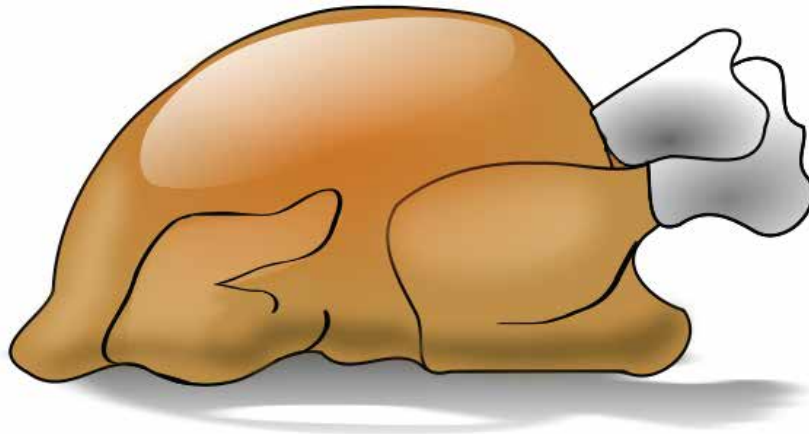


Thanksgiving Kakuro

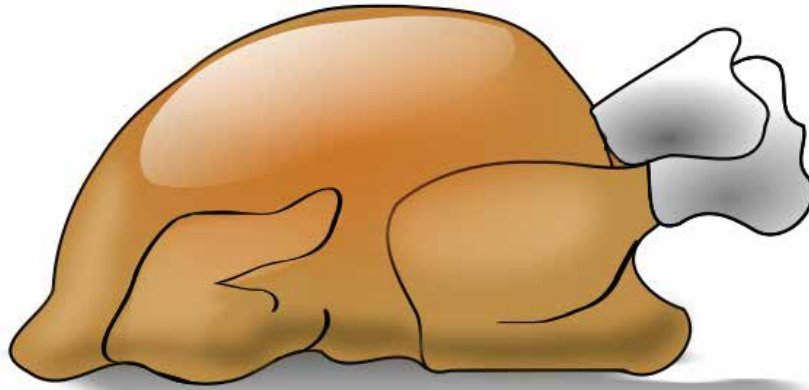
USE THE DIGITS 1 TO 9 TO FILL THE GRIDS SO THAT THE NUMBERS IN THE HORIZONTAL BLOCKS ADD UP TO THE CLUE NUMBERS ON THE LEFT OF A BLOCK, AND THE NUMBERS IN THE VERTICAL BLOCKS ADD UP TO THE CLUES ON TOP. EACH DIGIT CAN ONLY BE USED ONCE PER BLOCK!



			9	26		11	11		9	7	
		4			4			8			
14	22						21			8	
30					31						
			4		9				9		
14			25			11			26		
32							9				
					19	14				7	
		7			31						
		13			13						
	9			19				4			
			18					16			
	26						7				
							14		9	16	
		14				19					
	4	12			10						
9			4			6			4		
			9			8			7		
32							22				
	4			4			10				

Answers

USE THE DIGITS 1 TO 9 TO FILL THE GRIDS SO THAT THE NUMBERS IN THE HORIZONTAL BLOCKS ADD UP TO THE CLUE NUMBERS ON THE LEFT OF A BLOCK, AND THE NUMBERS IN THE VERTICAL BLOCKS ADD UP TO THE CLUES ON TOP. EACH DIGIT CAN ONLY BE USED ONCE PER BLOCK!



			9	26		11	11		9	7		
		4	1	3	4	3	1	8	7	1	8	
14	22							21				
30	7	6	8	9	9	31	8	7	9	2	4	1
14	5	9	4	1	3	11	3	8	9	2	7	
		25							26			
32	2	7	9	8	6	19	14	9	1	8	7	
		7	2	5	31	5	8	3	9	6		
		13			13							
	9	4	5	19	5	8	6	4	3	1		
		18						16				
	26	9	1	2	8	6	7	2	5	9	16	
		14	8	6	19	9	3	1	2	4		
	4	12			10							
9	1	8	4	1	3	6	5	1	4	1	3	
		9				8			7			
32	3	1	8	9	6	5	22	4	3	6	9	
		4	3	1	4	1	3	10	6	4		