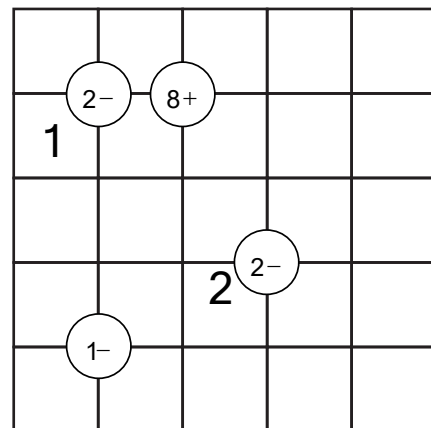
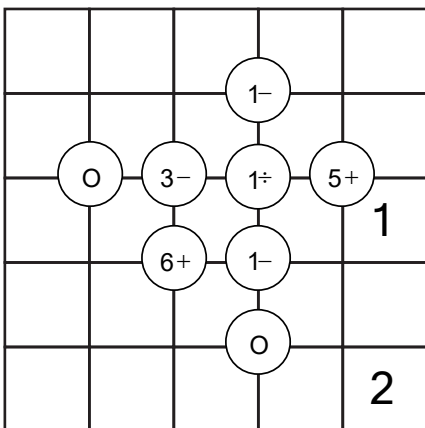
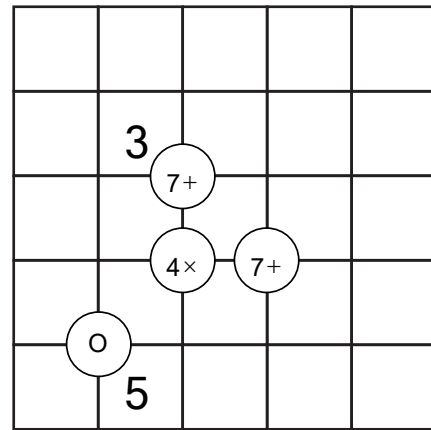
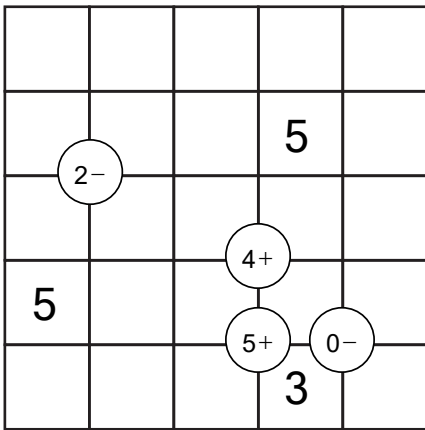


5 by 5 Mathrix Puzzles

Place the number 1 to 5 such that each row and column contains the digits 1 to 5. Circles with conditions are placed on some intersections and are meant for the 2 pairs of diagonally adjacent cells. This can be the sum (+), difference (-), product (\times), quotient (\div), only odd (O) or only even (E).



Answers

Place the number 1 to 5 such that each row and column contains the digits 1 to 5. Circles with conditions are placed on some intersections and are meant for the 2 pairs of diagonally adjacent cells. This can be the sum (+), difference (-), product (\times), quotient (\div), only odd (O) or only even (E).

1	3	5	4	2
3	2	1	5	4
4	1	3	2	5
5	4	2	1	3
2	5	4	3	1

Conditions in circles:
 - (2,2): 2-
 - (3,3): 4+
 - (4,3): 5+
 - (4,4): 0-

2	4	3	1	5
4	3	5	2	1
1	2	4	5	3
5	1	2	3	4
3	5	1	4	2

Conditions in circles:
 - (2,3): 7+
 - (3,3): 4 \times
 - (3,4): 7+
 - (4,1): O

2	3	5	1	4
5	1	2	4	3
3	5	4	2	1
4	2	1	3	5
1	4	3	5	2

Conditions in circles:
 - (2,4): 1-
 - (3,1): O
 - (3,2): 3-
 - (3,3): 1 \div
 - (3,5): 5+
 - (4,2): 6+
 - (4,3): 1-
 - (5,3): O

2	3	4	5	1
1	4	5	2	3
5	1	3	4	2
3	5	2	1	4
4	2	1	3	5

Conditions in circles:
 - (2,1): 2-
 - (2,2): 8+
 - (3,4): 2-
 - (4,1): 1-