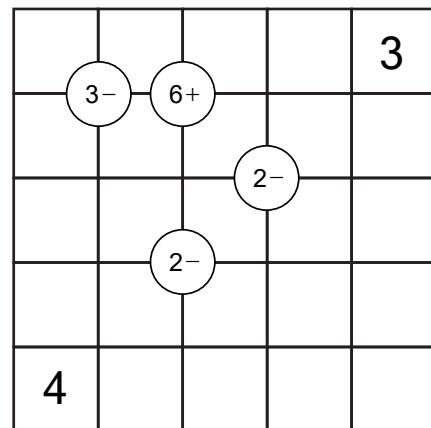
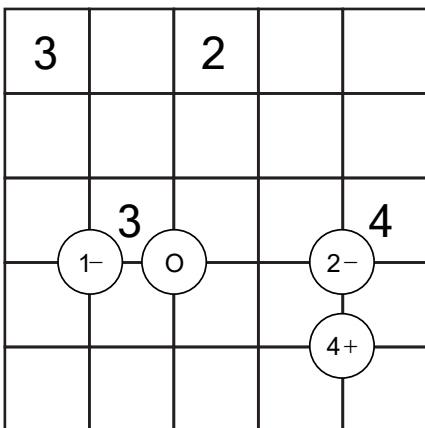
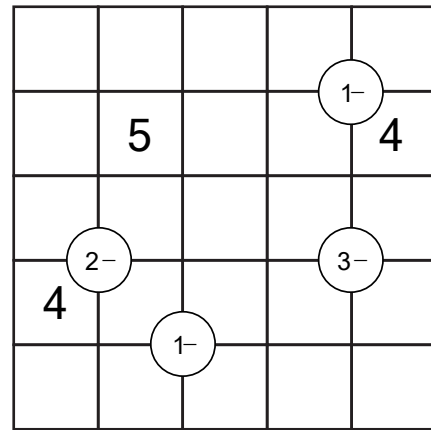
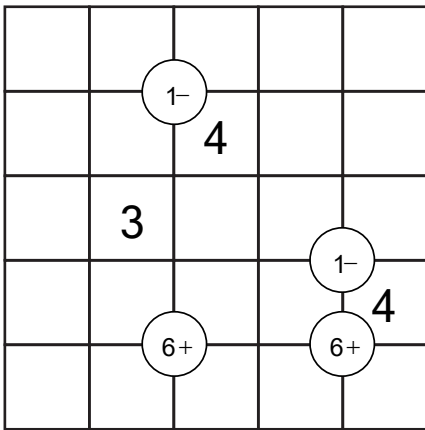


5 by 5 Mathrix Puzzles

Place the number 1 to 5 such that each row and column contains the digits 1 to 5. Circles with conditions are placed on some intersections and are meant for the 2 pairs of diagonally adjacent cells. This can be the sum (+), difference (-), product (\times), quotient (\div), only odd (O) or only even (E).



Answers

Place the number 1 to 5 such that each row and column contains the digits 1 to 5. Circles with conditions are placed on some intersections and are meant for the 2 pairs of diagonally adjacent cells. This can be the sum (+), difference (-), product (\times), quotient (\div), only odd (O) or only even (E).

2	5	3	4	1
3	2	4	1	5
4	3	1	5	2
5	1	2	3	4
1	4	5	2	3

3	1	4	5	2
2	5	1	3	4
1	2	3	4	5
4	3	5	2	1
5	4	2	1	3

3	5	2	4	1
1	2	4	3	5
2	3	1	5	4
4	1	5	2	3
5	4	3	1	2

2	4	1	5	3
1	5	2	3	4
3	2	5	4	1
5	3	4	1	2
4	1	3	2	5