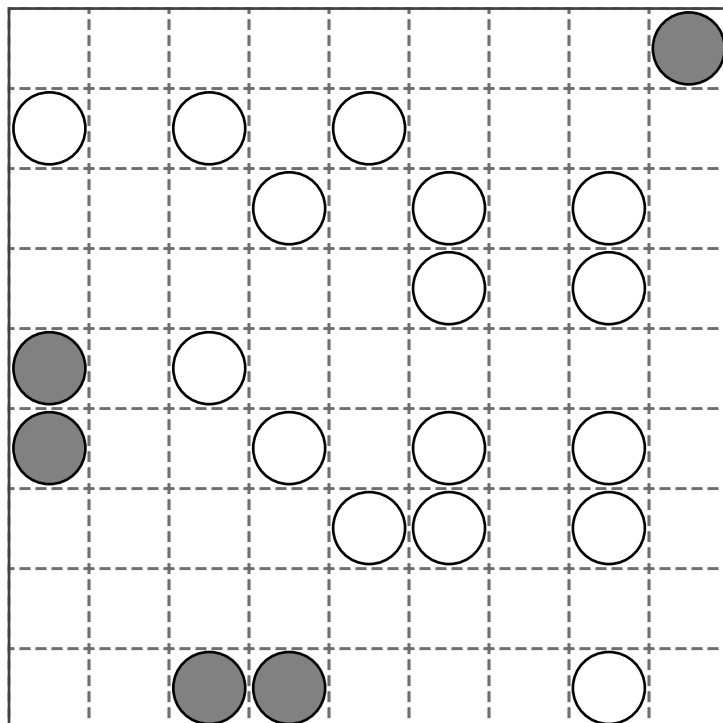
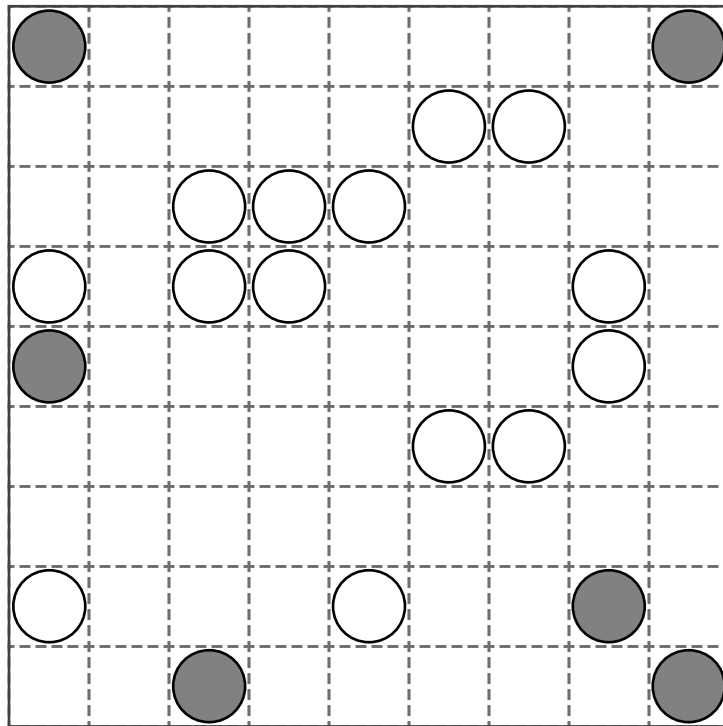


9 by 9 Masyu

Draw a single non-intersecting loop that passes horizontally or vertically through all circles. You must pass straight through white circles and then make a 90 degree turn in the preceding cell or next cell. The loop must make a 90 degree turn in dark circles, but must go straight through the next cell or the one before.



Answers

Draw a single non-intersecting loop that passes horizontally or vertically through all circles. You must pass straight through white circles and then make a 90 degree turn in the preceding cell or next cell. The loop must make a 90 degree turn in dark circles, but must go straight through the next cell or the one before.

