

Lowest Common Multiple

Name: _____ Class: _____

Find the lowest common multiple of the following sets of numbers.

$13 \text{ and } 20 = \underline{\hspace{2cm}}$

$13 \text{ and } 64 = \underline{\hspace{2cm}}$

$20 \text{ and } 18 = \underline{\hspace{2cm}}$

$14 \text{ and } 20 = \underline{\hspace{2cm}}$

$14 \text{ and } 96 = \underline{\hspace{2cm}}$

$15 \text{ and } 70 = \underline{\hspace{2cm}}$

$10 \text{ and } 56 = \underline{\hspace{2cm}}$

$17 \text{ and } 51 = \underline{\hspace{2cm}}$

$12 \text{ and } 75 = \underline{\hspace{2cm}}$

$14 \text{ and } 25 = \underline{\hspace{2cm}}$

$15 \text{ and } 80 = \underline{\hspace{2cm}}$

$14 \text{ and } 26 = \underline{\hspace{2cm}}$

$19 \text{ and } 90 = \underline{\hspace{2cm}}$

$12 \text{ and } 35 = \underline{\hspace{2cm}}$

$14 \text{ and } 74 = \underline{\hspace{2cm}}$

$12 \text{ and } 62 = \underline{\hspace{2cm}}$

$18 \text{ and } 38 = \underline{\hspace{2cm}}$

$17 \text{ and } 64 = \underline{\hspace{2cm}}$

$17 \text{ and } 62 = \underline{\hspace{2cm}}$

$12 \text{ and } 25 = \underline{\hspace{2cm}}$

$30 \text{ and } 40 = \underline{\hspace{2cm}}$

$21 \text{ and } 30 = \underline{\hspace{2cm}}$

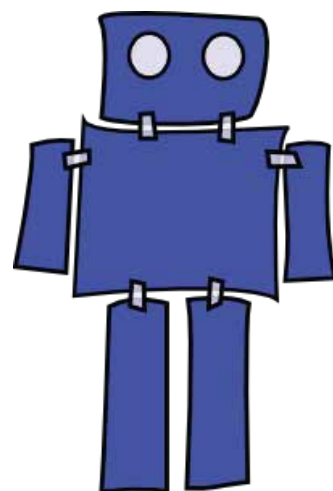
$15 \text{ and } 90 = \underline{\hspace{2cm}}$

$15 \text{ and } 85 = \underline{\hspace{2cm}}$

$16 \text{ and } 60 = \underline{\hspace{2cm}}$

$12 \text{ and } 30 = \underline{\hspace{2cm}}$

$24 \text{ and } 34 = \underline{\hspace{2cm}}$



Answers

Find the lowest common multiple of the following sets of numbers.

$13 \text{ and } 20 = \underline{260}$

$13 \text{ and } 64 = \underline{832}$

$20 \text{ and } 18 = \underline{180}$

$14 \text{ and } 20 = \underline{140}$

$14 \text{ and } 96 = \underline{672}$

$15 \text{ and } 70 = \underline{210}$

$10 \text{ and } 56 = \underline{280}$

$17 \text{ and } 51 = \underline{51}$

$12 \text{ and } 75 = \underline{300}$

$14 \text{ and } 25 = \underline{350}$

$15 \text{ and } 80 = \underline{240}$

$14 \text{ and } 26 = \underline{182}$

$19 \text{ and } 90 = \underline{1,710}$

$12 \text{ and } 35 = \underline{420}$

$14 \text{ and } 74 = \underline{518}$

$12 \text{ and } 62 = \underline{372}$

$18 \text{ and } 38 = \underline{342}$

$17 \text{ and } 64 = \underline{1,088}$

$17 \text{ and } 62 = \underline{1,054}$

$12 \text{ and } 25 = \underline{300}$

$30 \text{ and } 40 = \underline{120}$

$21 \text{ and } 30 = \underline{210}$

$15 \text{ and } 90 = \underline{90}$

$15 \text{ and } 85 = \underline{255}$

$16 \text{ and } 60 = \underline{240}$

$12 \text{ and } 30 = \underline{60}$

$24 \text{ and } 34 = \underline{408}$

