

# Dividing Decimals by Decimals

Name: \_\_\_\_\_ Class: \_\_\_\_\_

Divide the following decimal numbers (round off to nearest hundredth)

$3.1 \div 0.12 =$

$1.7 \div 0.15 =$

$4.4 \div 0.25 =$

$6.8 \div 0.45 =$

$0.6 \div 1.3 =$

$4.7 \div 0.2 =$

$0.8 \div 0.2 =$

$6.5 \div 0.95 =$

$7.1 \div 0.75 =$

$3.5 \div 0.25 =$

$2.7 \div 0.65 =$

$6.5 \div 1.25 =$

$0.6 \div 0.6 =$

$5.2 \div 0.3 =$

$5.2 \div 1.9 =$

$3.1 \div 1.4 =$

$8.2 \div 0.22 =$

$7.4 \div 0.2 =$

$2.8 \div 0.35 =$

$2.7 \div 0.31 =$

$3.8 \div 0.68 =$

$5.5 \div 0.3 =$

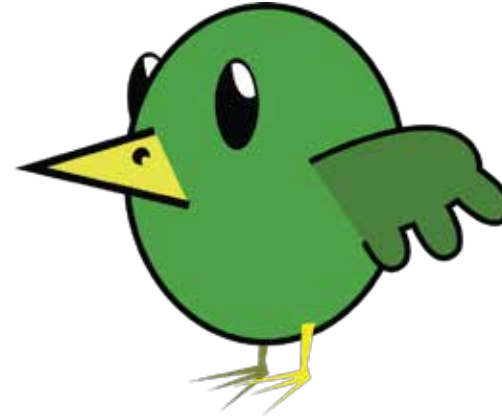
$3.1 \div 0.35 =$

$3.6 \div 0.16 =$

$2.2 \div 0.78 =$

$5.5 \div 0.29 =$

$6.6 \div 0.25 =$



# Answers

Divide the following decimal numbers (round off to nearest hundredth)

$3.1 \div 0.12 = 25.83$

$1.7 \div 0.15 = 11.33$

$4.4 \div 0.25 = 18$

$6.8 \div 0.45 = 15.11$

$0.6 \div 1.3 = 0.46$

$4.7 \div 0.2 = 23.5$

$0.8 \div 0.2 = 4$

$6.5 \div 0.95 = 6.84$

$7.1 \div 0.75 = 9.47$

$3.5 \div 0.25 = 14$

$2.7 \div 0.65 = 4.15$

$6.5 \div 1.25 = 5.2$

$0.6 \div 0.6 = 1$

$5.2 \div 0.3 = 17.33$

$5.2 \div 1.9 = 2.74$

$3.1 \div 1.4 = 2.21$

$8.2 \div 0.22 = 37.27$

$7.4 \div 0.2 = 37$

$2.8 \div 0.35 = 8$

$2.7 \div 0.31 = 8.71$

$3.8 \div 0.68 = 5.59$

$5.5 \div 0.3 = 18.33$

$3.1 \div 0.35 = 8.86$

$3.6 \div 0.16 = 22.5$

$2.2 \div 0.78 = 2.82$

$5.5 \div 0.29 = 18.97$

$6.6 \div 0.25 = 26.4$

