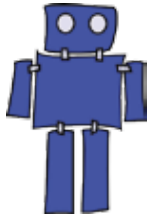


# Highest Common Factor

Name: \_\_\_\_\_ Class: \_\_\_\_\_

Find the highest common factor of the following numbers:



(1) HCF of 12 and 15 \_\_\_\_\_

(5) HCF of 16 and 24 \_\_\_\_\_

(2) HCF of 10 and 8 \_\_\_\_\_

(6) HCF of 12 and 18 \_\_\_\_\_

(3) HCF of 20 and 15 \_\_\_\_\_

(7) HCF of 50 and 15 \_\_\_\_\_

(4) HCF of 25 and 10 \_\_\_\_\_

8) HCF of 20 and 40 \_\_\_\_\_

(9) HCF of 18 and 30 \_\_\_\_\_

(13) HCF of 8 and 24 \_\_\_\_\_

(10) HCF of 12 and 24 \_\_\_\_\_

(14) HCF of 5 and 50 \_\_\_\_\_

(11) HCF of 15 and 75 \_\_\_\_\_

(15) HCF of 12 and 50 \_\_\_\_\_

(12) HCF of 25 and 50 \_\_\_\_\_

(16) HCF of 8 and 100 \_\_\_\_\_

(17) HCF of 14 and 16 \_\_\_\_\_

(22) HCF of 10 and 30 \_\_\_\_\_

(18) HCF of 20 and 24 \_\_\_\_\_

(23) HCF of 24 and 32 \_\_\_\_\_

(19) HCF of 12 and 21 \_\_\_\_\_

(24) HCF of 48 and 12 \_\_\_\_\_

(21) HCF of 27 and 15 \_\_\_\_\_

(25) HCF of 13 and 15 \_\_\_\_\_

## Answers

(1) HCF of 12 and 15 3

(5) HCF of 16 and 24 8

(2) HCF of 10 and 8 2

(6) HCF of 12 and 18 6

(3) HCF of 20 and 15 5

(7) HCF of 50 and 15 5

(4) HCF of 25 and 10 5

(8) HCF of 20 and 40 20

(9) HCF of 18 and 30 6

(13) HCF of 8 and 24 8

(10) HCF of 12 and 24 12

(14) HCF of 5 and 50 5

(11) HCF of 15 and 75 15

(15) HCF of 12 and 50 2

(12) HCF of 25 and 50 25

(16) HCF of 8 and 100 4

(17) HCF of 14 and 16 2

(22) HCF of 10 and 30 10

(18) HCF of 20 and 24 4

(23) HCF of 24 and 32 8

(19) HCF of 12 and 21 3

(24) HCF of 48 and 12 12

(21) HCF of 27 and 15 3

(25) HCF of 13 and 15 1