

# Fractions of a Set

Name: \_\_\_\_\_ Class: \_\_\_\_\_

Calculate these fractions of sets

$$\frac{1}{2} \text{ of } 150 =$$

$$\frac{1}{3} \text{ of } 60 =$$

$$\frac{1}{3} \text{ of } 75 =$$

$$\frac{1}{4} \text{ of } 80 =$$

$$\frac{1}{2} \text{ of } 100 =$$

$$\frac{1}{3} \text{ of } 150 =$$

$$\frac{1}{2} \text{ of } 90 =$$

$$\frac{1}{2} \text{ of } 180 =$$

$$\frac{1}{2} \text{ of } 104 =$$

$$\frac{1}{5} \text{ of } 150 =$$

$$\frac{1}{3} \text{ of } 90 =$$

$$\frac{1}{3} \text{ of } 123 =$$

$$\frac{1}{6} \text{ of } 120 =$$

$$\frac{1}{10} \text{ of } 150 =$$

$$\frac{1}{2} \text{ of } 170 =$$

$$\frac{1}{4} \text{ of } 200 =$$

$$\frac{1}{2} \text{ of } 110 =$$

$$\frac{1}{2} \text{ of } 130 =$$

$$\frac{1}{4} \text{ of } 160 =$$

$$\frac{1}{2} \text{ of } 70 =$$

$$\frac{1}{4} \text{ of } 120 =$$

$$\frac{1}{2} \text{ of } 60 =$$

$$\frac{1}{3} \text{ of } 180 =$$

$$\frac{1}{3} \text{ of } 99 =$$

$$\frac{1}{7} \text{ of } 140 =$$

$$\frac{1}{4} \text{ of } 200 =$$

$$\frac{1}{2} \text{ of } 104 =$$

$$\frac{1}{9} \text{ of } 90 =$$

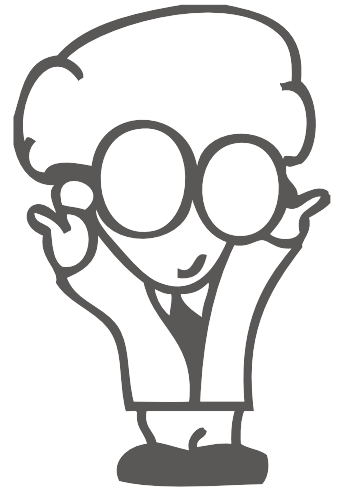
$$\frac{1}{6} \text{ of } 180 =$$

$$\frac{1}{5} \text{ of } 100 =$$

$$\frac{1}{8} \text{ of } 160 =$$

$$\frac{1}{3} \text{ of } 120 =$$

$$\frac{1}{7} \text{ of } 210 =$$



# Answers

Calculate these fractions of sets

$$\frac{1}{2} \text{ of } 150 = 75$$

$$\frac{1}{3} \text{ of } 60 = 20$$

$$\frac{1}{3} \text{ of } 75 = 25$$

$$\frac{1}{4} \text{ of } 80 = 20$$

$$\frac{1}{2} \text{ of } 100 = 50$$

$$\frac{1}{3} \text{ of } 150 = 50$$

$$\frac{1}{2} \text{ of } 90 = 45$$

$$\frac{1}{2} \text{ of } 180 = 90$$

$$\frac{1}{2} \text{ of } 104 = 52$$

$$\frac{1}{5} \text{ of } 150 = 30$$

$$\frac{1}{3} \text{ of } 90 = 30$$

$$\frac{1}{3} \text{ of } 123 = 41$$

$$\frac{1}{6} \text{ of } 120 = 20$$

$$\frac{1}{10} \text{ of } 150 = 15$$

$$\frac{1}{2} \text{ of } 170 = 85$$

$$\frac{1}{4} \text{ of } 200 = 50$$

$$\frac{1}{2} \text{ of } 110 = 55$$

$$\frac{1}{2} \text{ of } 130 = 65$$

$$\frac{1}{4} \text{ of } 160 = 40$$

$$\frac{1}{2} \text{ of } 70 = 35$$

$$\frac{1}{4} \text{ of } 120 = 30$$

$$\frac{1}{2} \text{ of } 60 = 30$$

$$\frac{1}{3} \text{ of } 180 = 60$$

$$\frac{1}{3} \text{ of } 99 = 33$$

$$\frac{1}{7} \text{ of } 140 = 20$$

$$\frac{1}{4} \text{ of } 200 = 50$$

$$\frac{1}{2} \text{ of } 104 = 52$$

$$\frac{1}{9} \text{ of } 90 = 10$$

$$\frac{1}{6} \text{ of } 180 = 30$$

$$\frac{1}{5} \text{ of } 100 = 20$$

$$\frac{1}{8} \text{ of } 160 = 20$$

$$\frac{1}{3} \text{ of } 120 = 40$$

$$\frac{1}{7} \text{ of } 210 = 30$$

