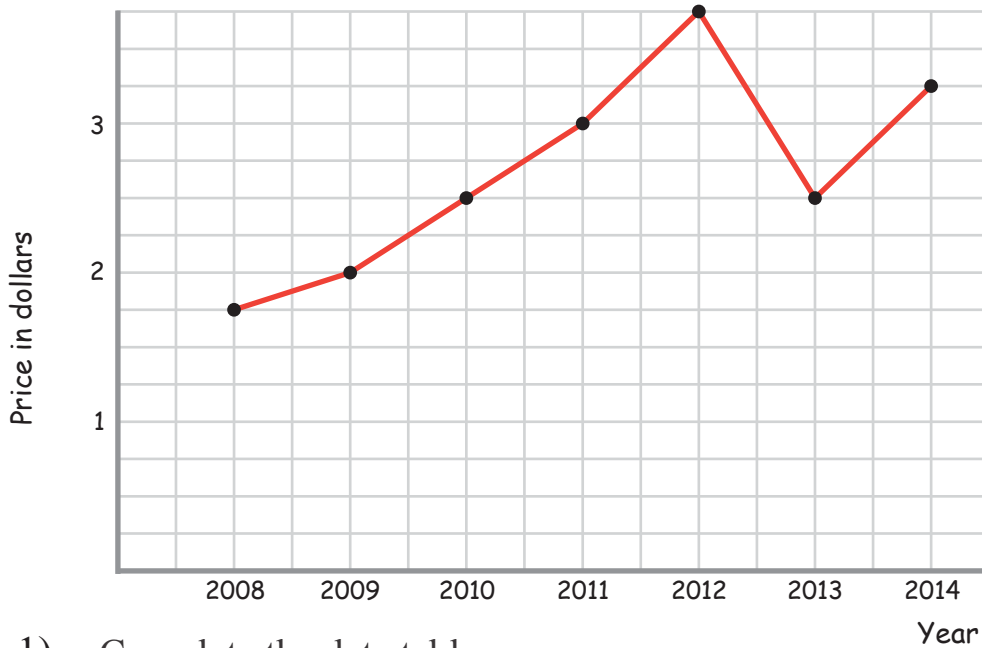


# Price of Gasoline

Name: \_\_\_\_\_ Class: \_\_\_\_\_

The following line graph shows the price of gasoline per gallon per year. Use the information to complete the data table and answer the questions.



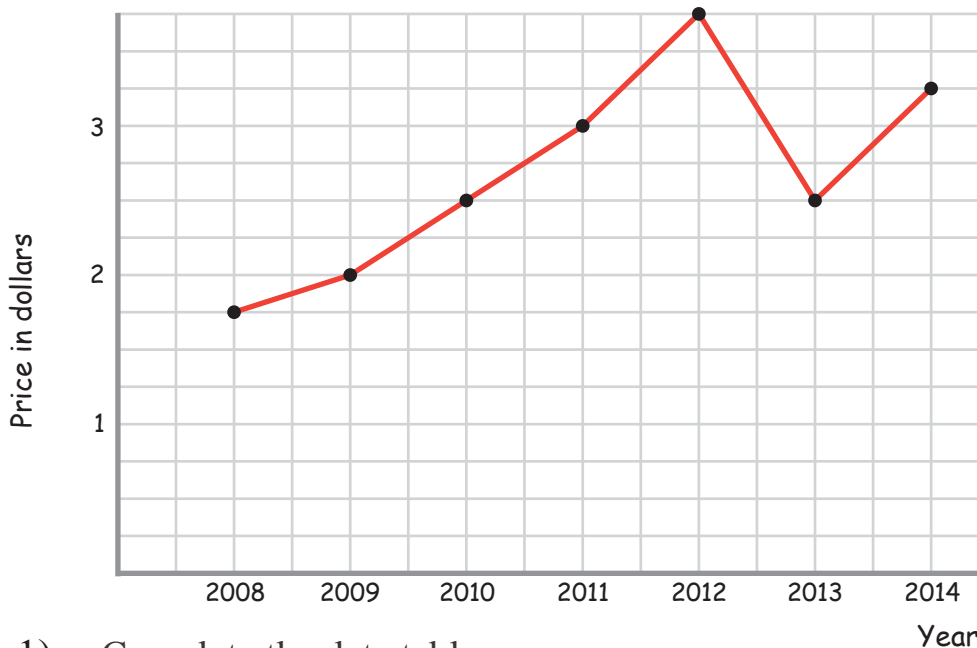
1) Complete the data table

Year	2008	2009	2010	2011	2012	2013	2014
Price in \$			\$2.50				

- 2) What was the price of a gallon of gasoline in 2011?
- 3) Did the price of gasoline go up or down in 2012 compared to 2011?
- 4) How much did it go up or down?
- 5) In which year was the price the highest?
- 6) How much did the price of gasoline go up between 2008 and 2014?

# Answers

The following line graph shows the price of gasoline per gallon per year. Use the information to complete the data table and answer the questions.



1) Complete the data table

Year	2008	2009	2010	2011	2012	2013	2014
Price in \$	\$1.75	\$2.00	\$2.50	\$3.00	\$3.75	\$2.50	\$3.25

2) What was the price of a gallon of gasoline in 2011?

3 dollars

3) Did the price of gasoline go up or down in 2012 compared to 2011?

up

4) How much did it go up or down?

$3.75 - 3.00 = \$ 0.75$  (or 75 cents)

5) In which year was the price the highest?

in 2012

6) How much did the price of gasoline go up between 2008 and 2014?

$3.25 - 1.75 = \$ 1.50$  per gallon