

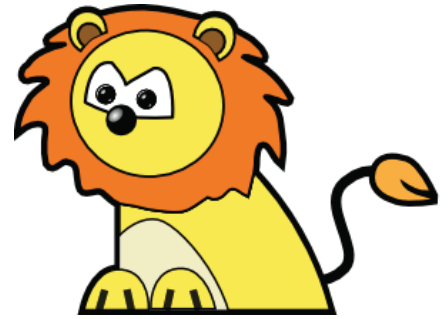
Multiplication and Subtraction

Name: _____ Class: _____

Calculate

$40 \times 23 - 129 =$

$64 \times 44 - 232 =$



$10 \times 34 - 257 =$

$37 \times 19 - 157 =$

$96 \times 62 - 445 =$

$60 \times 54 - 251 =$

$28 \times 16 - 247 =$

$80 \times 28 - 838 =$

$87 \times 13 - 375 =$

$62 \times 54 - 322 =$

$74 \times 39 - 333 =$

$80 \times 76 - 855 =$

$95 \times 63 - 221 =$

$36 \times 43 - 478 =$

$66 \times 71 - 202 =$

$51 \times 27 - 326 =$

$25 \times 25 - 342 =$

$53 \times 17 - 243 =$

$88 \times 56 - 267 =$

$12 \times 24 - 113 =$

$54 \times 33 - 188 =$

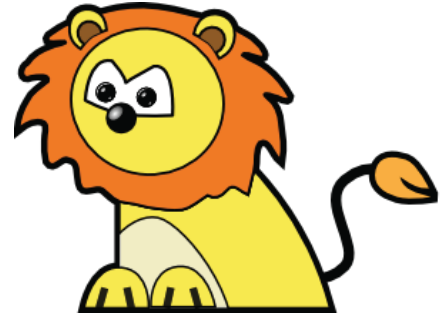
$80 \times 35 - 249 =$

Answers

Calculate

$40 \times 23 - 129 = 791$

$64 \times 44 - 232 = 2,584$



$10 \times 34 - 257 = 83$

$37 \times 19 - 157 = 546$

$96 \times 62 - 445 = 5,507$

$60 \times 54 - 251 = 2,989$

$28 \times 16 - 247 = 201$

$80 \times 28 - 838 = 1,402$

$87 \times 13 - 375 = 756$

$62 \times 54 - 322 = 3,026$

$74 \times 39 - 333 = 2,553$

$80 \times 76 - 855 = 5,225$

$95 \times 63 - 221 = 5,764$

$36 \times 43 - 478 = 1,070$

$66 \times 71 - 202 = 4,484$

$51 \times 27 - 326 = 1,051$

$25 \times 25 - 342 = 283$

$53 \times 17 - 243 = 658$

$88 \times 56 - 267 = 4,661$

$12 \times 24 - 113 = 175$

$54 \times 33 - 188 = 1,594$

$80 \times 35 - 249 = 2,551$