

Comparing Decimals up to Thousandths

Name: _____ Score: _____

Compare the following decimals by using $>$, $<$ or $=$.

1.013 1.012

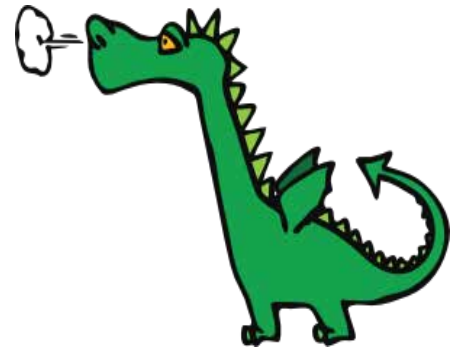
1.334 1.345

0.442 0.44

0.150 0.15

3.499 3.5

2.945 2.9



1.25 1.260

0.080 0.08

1.15 1.016

2.879 1.889

1.2 1.176

1.44 1.356

1.56 1.057

2.1 2.009

1.34 1.035

0.002 0.01

1.55 2.54

1.19 1.022

1.035 1.304

1.03 1.030

1.223 1.214

1.800 1.8

Answers

Compare the following decimals by using $>$, $<$ or $=$.

$1.013 > 1.012$

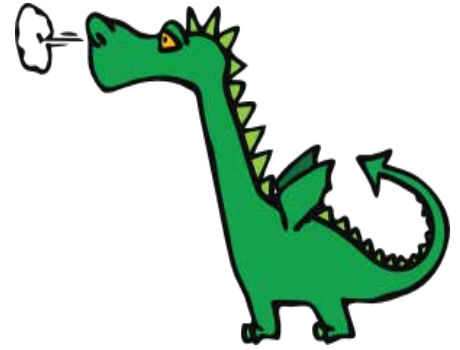
$1.334 < 1.345$

$0.442 > 0.44$

$0.150 = 0.15$

$3.499 < 3.5$

$2.945 > 2.9$



$1.25 < 1.260$

$0.080 = 0.08$

$1.15 > 1.016$

$2.879 > 1.889$

$1.2 > 1.176$

$1.44 > 1.356$

$1.56 > 1.057$

$2.1 < 2.009$

$1.34 > 1.035$

$0.002 < 0.01$

$1.55 < 2.54$

$1.19 > 1.022$

$1.035 < 1.304$

$1.03 = 1.030$

$1.223 > 1.214$

$1.800 = 1.8$