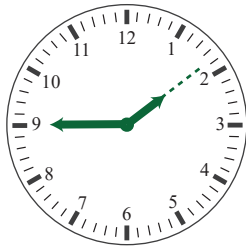


# Matching clocks

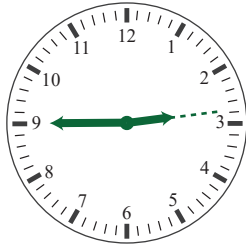
Match the time and the clocks

quarter to 2 •



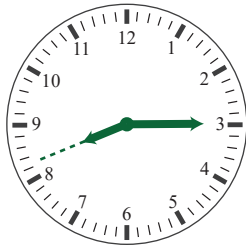
• quarter to 3

quarter past 8 •



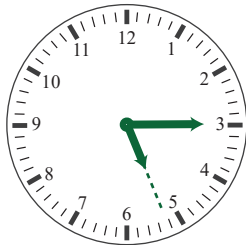
• 1 : 45

2 : 45 •



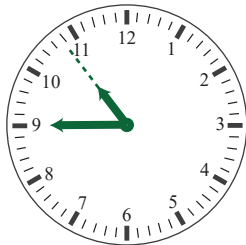
• quarter past 5

quarter to 11 •



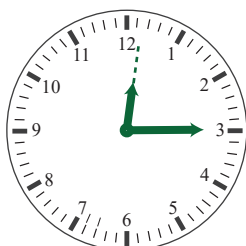
• 8 : 15

quarter past 12 •



• 12 : 15

5 : 15 •

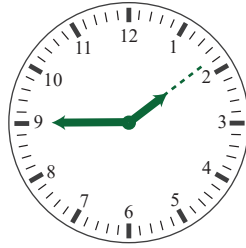


• 10 : 45

# Matching clocks

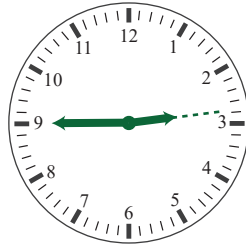
Match the time and the clocks

quarter to 2



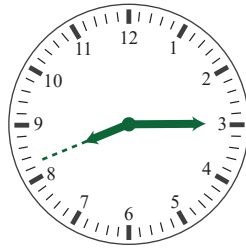
quarter to 3

quarter past 8



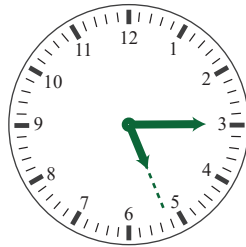
1 : 45

2 : 45



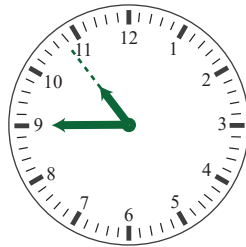
quarter past 5

quarter to 11



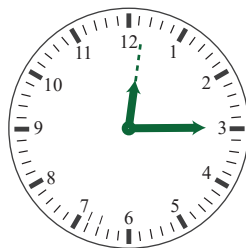
8 : 15

quarter past 12



12 : 15

5 : 15



10 : 45