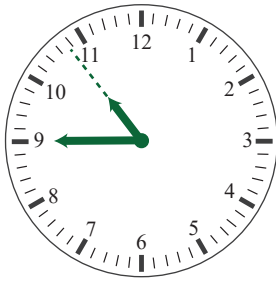


Telling time to the nearest 15 minutes

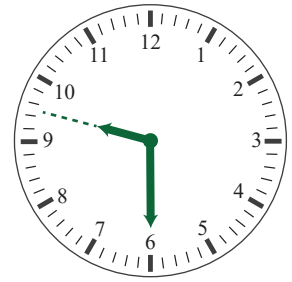
Write the time. Use 'half past', '15 to' and '15 past'



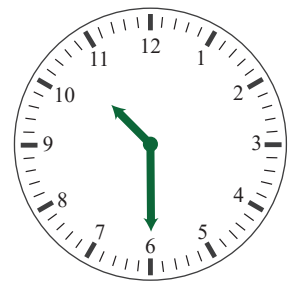
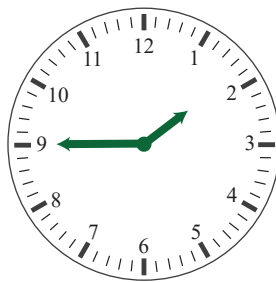
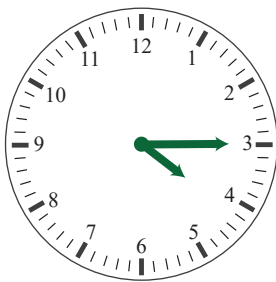
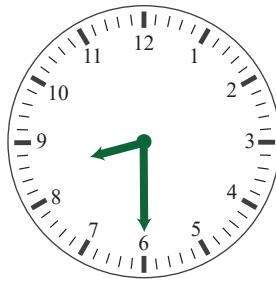
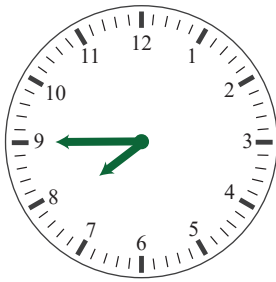
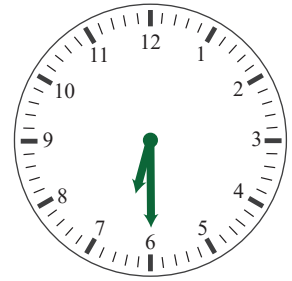
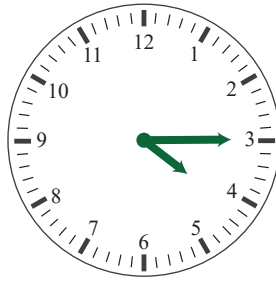
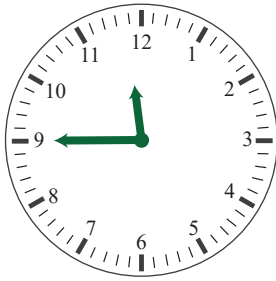
15 to 11



15 past 10

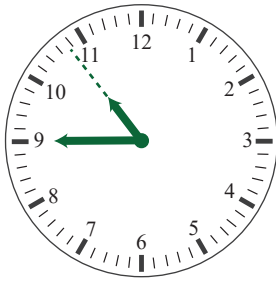


half past 9

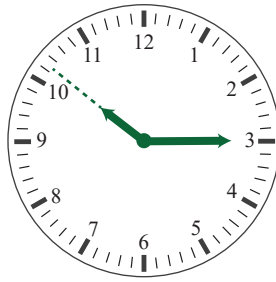


Telling time to the nearest 15 minutes

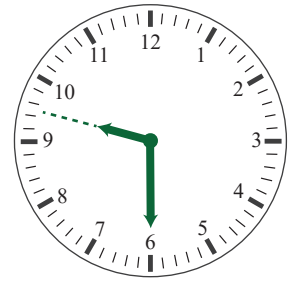
Write the time. Use 'half past', '15 to' and '15 past'



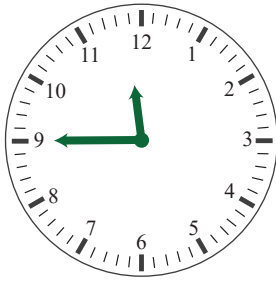
15 to 11



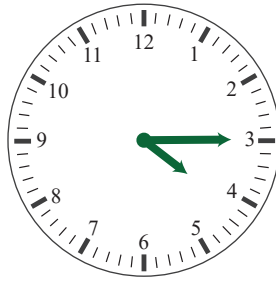
15 past 10



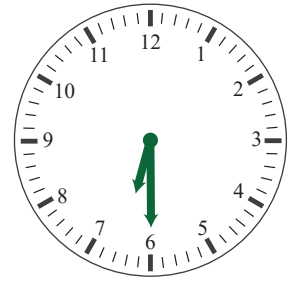
half past 9



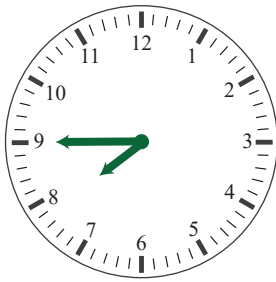
15 to 12



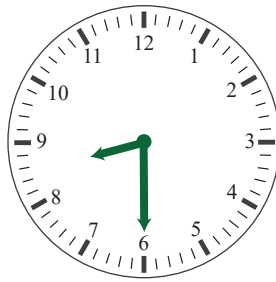
15 past 4



half past 6



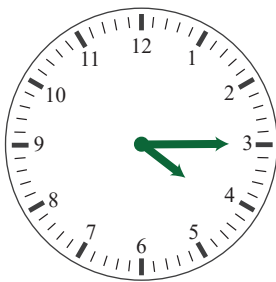
15 to 8



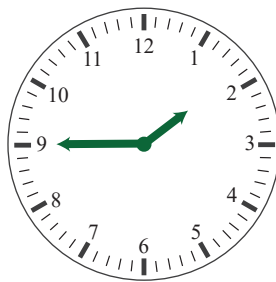
half past 8



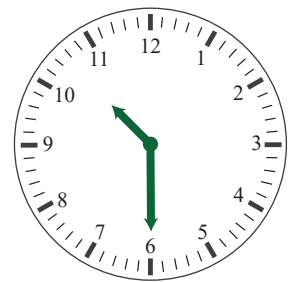
15 past 1



15 past 4



15 to 2



half past 10
