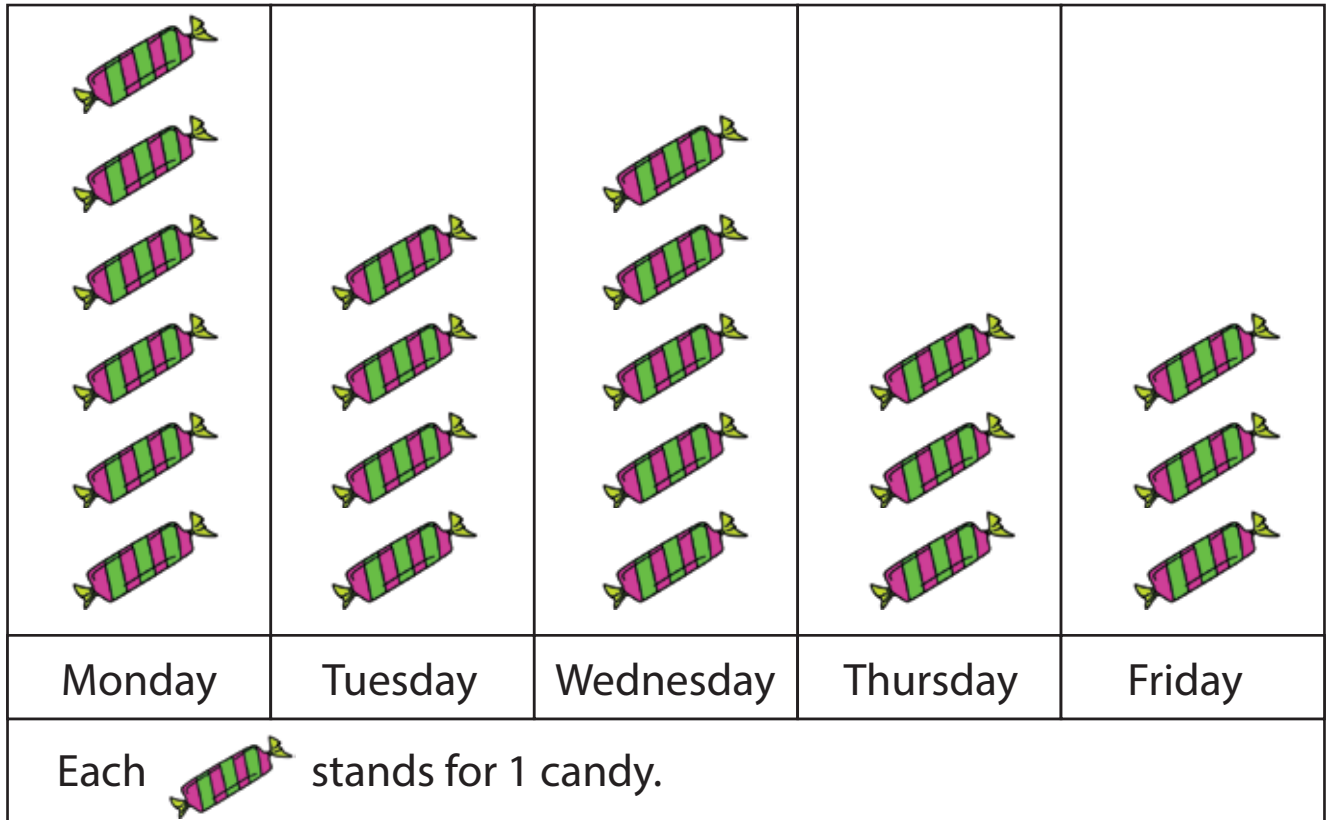


# I love candies Graph

Name: \_\_\_\_\_ Score: \_\_\_\_\_

The following picture graph shows the number of candies I got from Monday to Friday. Answer the questions.



## Question 1

How many candies did I get on Monday?

## Question 2

How many candies did I get on Friday?

## Question 3

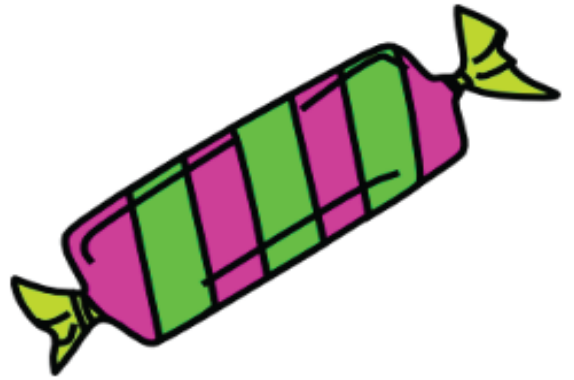
How many candies did I get on Tuesday, Wednesday and Friday altogether?

**Question 4**

On which day did I get most candies?

**Question 5**

On Which days did I get the least candies?



**Question 6**

How many more candies did I get on Monday than on Friday?

**Question 7**

If I ate 2 of the candies I got on Monday, how many candies did I have left that day?

**Question 8**

On which day did I get 24 - 19 candies?

**Question 9**

On which 2 days together did I get 6 candies altogether?

# Answers

Q1 6 candies

Q6 3 candies

Q2 3 candies

Q7 4 candies

Q3 12 candies

Q8 Wednesday

Q4 Monday

Q9 Thur/Fri

Q5 Thur/Fri